



Department of Anthropology

Spring/Summer 2014 Newsletter



Message from the Department Chair



Interim Dean Cynthia Berg and Associate Dean Rick Forster presenting the CSBS Research Day Cup

It is a pleasure to recognize the extraordinary achievements of our faculty and students and to present the news of the Department of Anthropology to our alumni, friends, parents, current students, prospective students and colleagues.

I invite you to read here about our recent successes and achievements. Professor Polly Wiessner has just been elected to the National Academy of Sciences (NAS), bringing our

current number of active NAS members in the Department to four. Professor Broughton won the Superior Teaching Award for the College of Social and Behavioral Sciences. Three undergraduates, and one graduate, were awarded Honor Roll Scholarships. Plus, Anthropology now holds the first ever CSBS Research Day Cup, awarded to the Department with the greatest

number of student participants on Research Day.

The Department is especially proud of our graduating class of 2013-2014. We congratulate them on their achievements and wish them well in their future endeavors.

We wish everyone a healthy, happy summer vacation. See you all in the Fall!

Student Awards

Honor Roll Awards

E. Rich Brewer Scholarship to Aaron Ethridge

CSBS Advisory Board Scholarship to Maxine Gavin

Vico E. and Patricia A. Henriques Scholarship to Bryce Christensen

Don and Sue Lewon Scholarship to Kathryn Mohlenhoff

Robert Anderson Scholar Award 1st place to Grace E. Hanley

Robert Anderson Scholar Award Finalist to Allison C. Sampson

Robert Anderson Scholar Award Finalist to Nathan P. Garcia

Anthropology Ambassadors

Grace Hanley, Alexandra Butler, and Sai Sameneni

Congratulations to our Graduating Students!

Congratulations to PhD, Masters and Bachelors graduates.

PhD students:

James "Ted" Coxworth
Derinna Kopp
Christopher Parker
James C. Redman
Layne Vashro

Masters students:

Lisa Benson
Ralph Burrillo
Kate Magargal
Chunfen Zhou
Peter Yaworsky

Graduation Dates:

Graduate CSBS Convocation
Thursday, May 1st 10:00 AM

General Commencement
Thursday, May 1st 6:30 PM

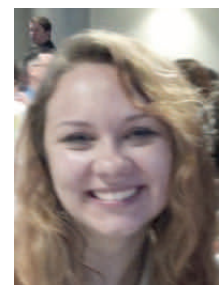
Undergraduate CSBS Convocation
Friday, May 2nd 9:00 AM

Anthropology Graduate Chosen as Convocation Speaker

Grace Hanley, a major in anthropology, psychology and sociology, has been chosen as the undergraduate speaker for the 2014 CSBS Convocation on Friday, May 2nd.

Grace has been an Anthropology Ambassador this year and she is also the 2014 recipient of the Robert Anderson Scholar Award.

We will miss her!

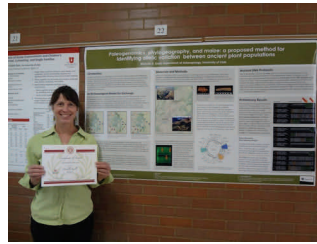


CSBS Research Day Cup

CSBS Student Research Day, April 18, 2014

- 1st Research Day Cup
- 1st Place Best Graduate Student Poster—Michelle Knoll
- 2nd Place Graduate Student Poster—Shannon Boomgarden

We will keep the cup for a year, and hopefully keep it next year, when our students submit more excellent research.



Research Day Poster winners:
1st place Michelle Knoll (top),
2nd place Shannon Boomgarden (bottom)



Research Day Participants and Poster Titles

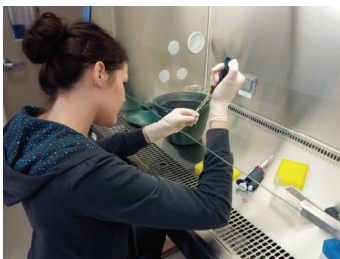
| | |
|--------------------|---------------------------------------------------------------------------------------------------------------------------------------|
| Molly Barnewitz | Sea Otter Resource Depressions? Analysis of <i>Enhydra lutris</i> remains from |
| Shannon Boomgarden | Experimental Maize Farming in Range Creek Canyon, Utah: Year One |
| Ralph Burrillo | Basket-Boiled Beans...? Testing Assumptions about Cooking Technology |
| Anna Hardesty | Comparison of Hypotheses on Timing of Menarche in Girls |
| Danielle Holliday | Intrauterine Growth Restriction Alters Estrogen Signaling in Rat Adipose Tissue in a Sex Dependent Manner |
| Michelle Knoll | Paleogenomics, phylogeography, and maize: a method for identifying allelic variation between ancient populations across the landscape |
| Michael Lewis | Variability In Carbon and Nitrogen Isotope Ratios in a Desert Food Source at Cedar Mesa, Utah |
| Kate Magargal | Firewood Collecting and Diet Breadth |
| Christopher Parker | The Pyrophilic Primate Hypothesis |
| Jamie Powell | Understanding Husani: Finding Patterns Behind Aggressive Behavior Among Hogle Zoo's Young Silverback |
| Allison Sampson | Developing Tech Talent in Students with Autism Spectrum Disorders |
| Allison Sampson | Growing Up as a Hunter-Gatherer. How Pume Children Spend Their Time |
| Peter Yaworsky | A preliminary test of ideal free distribution with the historic Anglo-American settlement of Utah |



Research Day Cup-Cont'd

Research in Anthropology

As the number of students participating in UROP and the CSBS Research Day demonstrates, there are many types of research opportunities for students in the Department of Anthropology. Some research arises out of Study Abroad experiences, other projects develop from special interests that are stimulated in class, and still other research might be stimulated by a student's interest in learning more about a specific subfield of anthropology. In the Department of Anthropology at Utah, we encourage our students to talk with faculty about their research interests and to try to explore these interests through UROP or ACCESS projects. This Spring, Natalie Spendlove (below) began studying the DNA of howler monkeys in the molecular genetics laboratory. This summer she plans to collect her own samples to continue her undergraduate UROP research.



Natalie Spendlove in the molecular genetics laboratory



Anthro Research Day Participants, Dept. Chair, and CSBS Deans (see left)

Students pictured: (not in order) Allison Sampson, Anna Hardesty, Christopher Parker, Danielle Holliday, Jamie Powell, Kate Magargal, Michael Lewis, Michelle Knoll, Molly Barnewitz, Peter Yaworsky, Ralph Burrillo

Undergraduate Research Opportunities Program

UROP assistantships are awarded to students working on original research with faculty sponsors. While students can provide significant help with a specific area of a larger faculty project, they are expected to write their own

research proposals and to be capable of independent work. THE UROP office provides financial support to students working on these projects and students are given opportunities to present their research results on campus and in the wider academic

community. On April 1st, 2014, a UROP Research Symposium was held at the Student Union and eleven Anthropology UROP students submitted their results as podium and poster presentations:

| | |
|--------------------------------------------------|-----------------------------------------------------------------------------------------------------------------------------|
| Kayla Adams (Polly Wiessner) | KALAHARI BUSHMAN SOCIAL NETWORKS IN A CHANGING WORLD |
| Mary "Molly" Barnewitz (Jack Broughton) | SEA OTTER RESOURCE DEPRESSION? ANALYSIS OF ENHYDRA LUTRIS REMAINS FROM YERBA BUENA SHELLMOUND, SAN FRANCISCO, CALIFORNIA |
| Franklin Easter (Adrian Bell) | PERSISTENCE OF RELIGIOUS BELIEFS & PRACTICES AMONG TONGANS |
| Bridget Grahmann (Polly Wiessner) | REFUGEE USE OF THE WOMEN, INFANTS AND CHILDREN PROGRAM |
| Julie Green (Adrian Bell) | UTAH-PACIFIC -ISLANDERS: HEALTH RELATED BELIEFS AND BEHAVIORS |
| Anna Hardesty (Karen Kramer) | COMPARISON OF HYPOTHESES ON TIMING OF MENARCHIE IN GIRLS |
| Justin Leaming (Thomas Flamson) | DOMINANCE AND CONSENT IN UTAH BDSM |
| Jacey Miller, Allison Sampson (Karen Kramer) | GROWING UP AS A HUNTER -GATHERER: HOW PUMÉ CHILDREN SPEND THEIR TIME |
| Tiara Nestel (Jack Broughton) | SEA OTTER PROCESSING INTENSITY AND PREHISTORIC RESOURCE STRESS: EVIDENCE FROM THE YERBA BUENA SHELLMOUND, SAN FRANCISCO BAY |
| Natalie Spendlove (Leslie Knapp) | GENETIC VARIATION AMONG HOWLER MONKEYS: NEW INSIGHTS FROM A PREVIOUSLY UNSTUDIED REGION |
| Maria Esperanza Zagal-Crosby (Polly Wiessner) | THE IMPACT OF SURGICAL SCARS ON SELF-IDENTITY |

Faculty Awards



Jack Broughton
CSBS Superior Teaching Award

Rick Paine and Brian Coddling
Finalists, CSBS Superior Teaching Award

Elizabeth Cashdan
Semi-Finalist, CSBS Superior Research Award

Mariana Di Paolo
35th Leigh Lecture at the Natural Museum of Utah History, April 2, *The Shoshoni Language from Oral Tradition to the Digital Age* (see left)

Polly Wiessner
National Academy of Science election (see below)

Joan Brenner-Coltrain
University Research Committee award to support her research, *El Nino Southern Oscillation (ENSO) and the Stable Isotope Chemistry of Scorpion Shelter Rabbits*

National Academy of Sciences Election



Professor Polly Wiessner from our own Department of Anthropology was among the newest group of members elected to the National Academy of Sciences.

Professor Wiessner is well known for her research on exchange networks in Africa's Kalahari Desert and in Papua New Guinea and for her study of warfare and aggression, particularly among the Enga in Papua New Guinea.

Professor Wiessner is a frequent public speaker, giving invited talks at Universities and

Conferences around the world. She is also a popular instructor, as students enjoy her courses on "The Cultures of Africa" and "The Anthropology of Food."

Professor Wiessner's nomination and election to the Anthropology sub-section of the NAS places her among 83 fellow members (as of 2014). The election of Professor Wiessner brings the total number of NAS members currently in the Department of Anthropology to four.

Professor Henry Harpending was elected in 1996, Professor Kristen Hawkes and Professor James O'Connell were elected in 2002 and 2006, respectively. Former NAS members from the Department of Anthropology at the University of Utah include the late Jesse Jennings, the late Julian Steward and Jeremy Sabloff (Santa Fe Institute).

"Out of Beringia?"



Dennis O'Rourke co-authored a Science Perspective column titled "Out of Beringia?" in February with archaeologist John Hoffecker of the University of Colorado at Boulder, and Scott Elias, a paleoecologist at the University of London. The authors seek to reconcile existing genetic and paleoenvironmental

evidence for human habitation on the Bering land bridge – also called Beringia – with an absence of archaeological evidence. "We're putting the paleoecological information together with the archaeology and genetics that speak to American origins and saying, look, there was an environment with trees and

shrubs that was very different than the open, grassy steppe. It was an area where people could have had resources, lived and persisted through the last glacial maximum in Beringia," O'Rourke says.